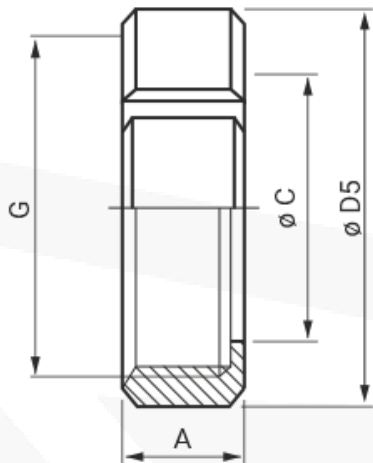


## РАЗМЕРНЫЕ ХАРАКТЕРИСТИКИ

## МУФТА СОЕДИНИТЕЛЬНАЯ

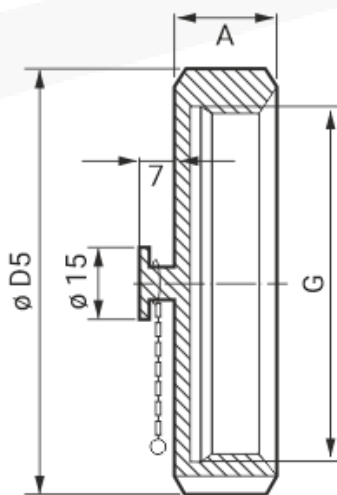
Стандарт: DIN 11851

## ГАЙКА ШЛИЦЕВАЯ



DN	A	G	D5	C
10	18.0	RD28x1/8	38.0	19.0
15	18.0	RD34 x 1/8	44.0	25.0
20	20.0	RD44 x 1/6	54.0	31.0
25	21.0	RD52 x 1/6	63.0	36.0
32	21.0	RD58 x 1/6	70.0	42.0
40	21.0	RD65 x 1/6	78.0	49.0
50	22.0	RD78 x 1/6	92.0	62.0
65	25.0	RD95 x 1/6	110.0	80.0
80	27.0	RD110 x 1/4	125.0	94.0
100	29.0	RD130 x 1/4	146.0	115.0
125	32.0	RD160 x 1/4	178.0	138.0
150	38.0	RD190 x 1/4	210.0	164.0

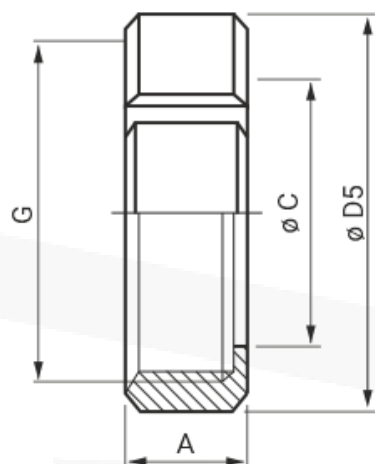
## ГАЙКА ГЛУХАЯ



DN	A	G	D5
10	18.0	RD28 x 1/8	38.0
15	18.0	RD34 x 1/8	44.0
20	21.0	RD44 x 1/6	54.0
25	21.0	RD52 x 1/6	63.0
32	21.0	RD58 x 1/6	70.0
40	21.0	RD65 x 1/6	78.0
50	22.0	RD78 x 1/6	92.0
65	25.0	RD95 x 1/6	112.0
80	29.0	RD110 x 1/4	127.0
100	31.0	RD130 x 1/4	148.0
125	35.0	RD160 x 1/4	178.0
150	40.0	RD190 x 1/4	210.0

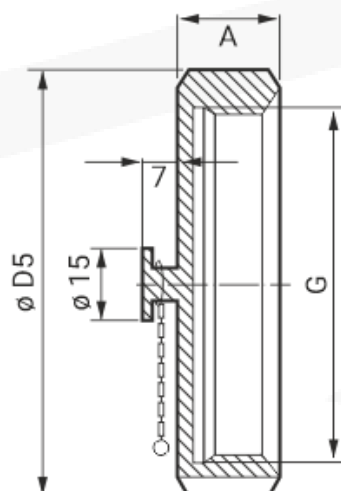
Стандарт: SMS

## ГАЙКА ШЛИЦЕВАЯ



DN	A	G	D5	C
20	18.0	RD34x1/6	44.0	25.0
25	20.1	RD40x1/6	50.0	32.0
40	22.0	RD60x1/6	72.0	48.0
50	22.0	RD70x1/6	82.0	60.5
65	25.0	RD85x1/6	97.0	74.0
80	26.0	RD98x1/6	111.0	87.0
100	30.0	RD125x1/6	138.0	117.0

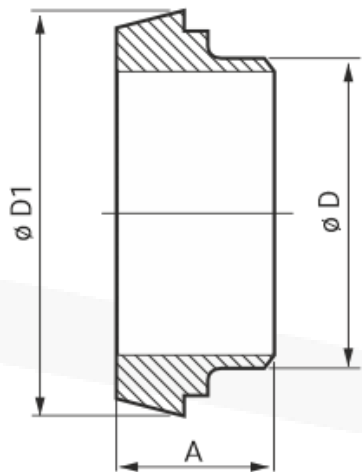
## ГАЙКА ГЛУХАЯ



DN	A	G	D5
25	20.0	RD40x1/6	50.0
40	25.0	RD60x1/6	72.0
50	26.0	RD70x1/6	82.0
65	30.0	RD85x1/6	97.0
80	32.0	RD98x1/6	111.0
100	32.0	RD125x1/6	138.0

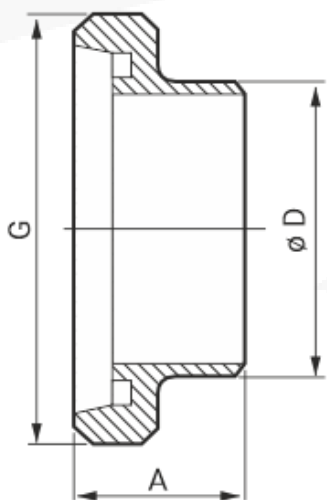
Стандарт: DIN 11851

## ШТУЦЕР КОНИЧЕСКИЙ



DN	A	D1	D
10	17.0	22.5	15.0
15	17.0	28.0	18.0
20	18.0	36.0	22.0
25	22.0	44.0	28.0
32	25.0	50.0	35.0
40	26.0	56.0	40.0
50	28.0	68.0	53.0
65	32.0	86.0	70.0
80	37.0	100.0	85.0
100	44.0	121.0	104.0
125	34.0	150.0	129.0
150	37.0	176.0	154.0

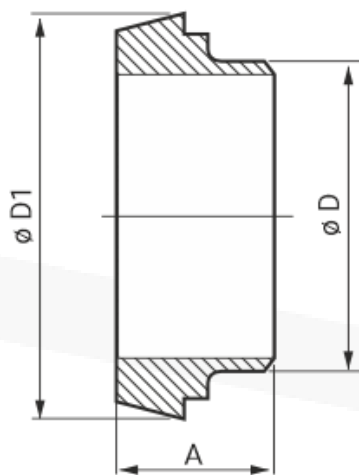
## ШТУЦЕР РЕЗЬБОВОЙ



DN	A	G	D
10	17.0	RD28x1/8	15.0
15	21.0	RD34 x 1/8	21.0
20	24.0	RD44 x 1/6	25.0
25	29.0	RD52 x 1/6	31.0
32	32.0	RD58 x 1/6	37.0
40	33.0	RD65 x 1/6	43.0
50	35.0	RD78 x 1/6	55.0
65	40.0	RD95 x 1/6	72.0
80	45.0	RD110 x 1/4	87.0
100	54.0	RD130 x 1/4	106.0
125	46.0	RD160 x 1/4	132.0
150	50.0	RD190 x 1/4	157.0

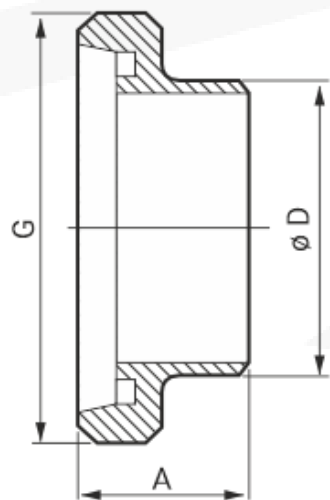
Стандарт: SMS

## ШТУЦЕР КОНИЧЕСКИЙ



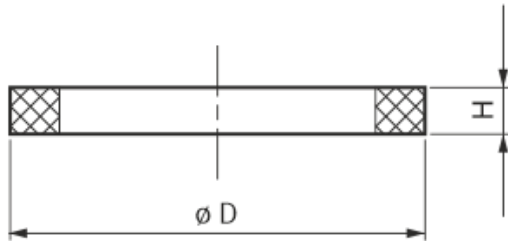
DN	A	D1	D
20	15.0	30.0	19.08
25	15.0	35.5	25.0
40	20.0	55.5	38.1
50	20.0	65.5	50.8
65	21.0	80.5	63.5
80	21.0	93.8	76.1
100	21.0	118.0	101.6

## ШТУЦЕР РЕЗЬБОВОЙ



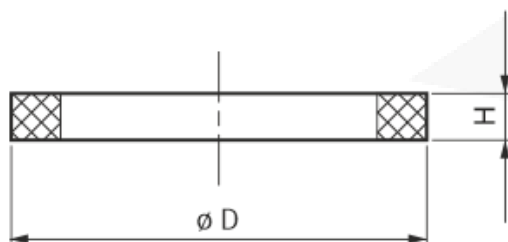
DN	A	G	D
20	15.0	RD34x1/6	19.08
25	19.0	RD40x1/6	25.0
40	23.0	RD60x1/6	38.0
50	23.0	RD70x1/6	50.8
65	27.0	RD85x1/6	63.5
80	27.0	RD98x1/6	76.1
100	27.0	RD125x1/6	101.6

## УПЛОТНИТЕЛЬ DIN



DN	D	H
10	20	4.0
15	26	5.0
20	33	5.0
25	40	5.0
32	46	5.0
40	52	5.0
50	64	5.0
65	81	5.0
80	95	5.0
100	114	5.0
125	142	6.0
150	167	6.0

## УПЛОТНИТЕЛЬ SMS



DN	D	H
20	25.5	5.5
25	33	5.5
40	48	5.5
50	61	5.5
65	73	5.5
80	86	6.0
100	114	6.0