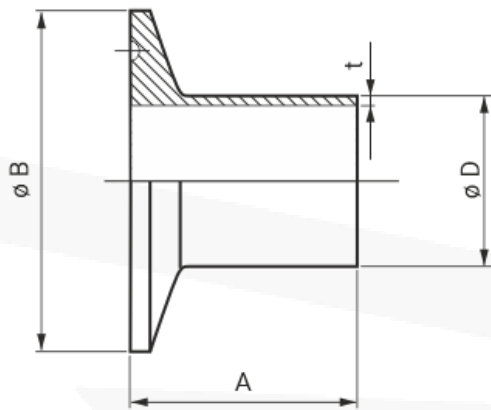


## РАЗМЕРНЫЕ ХАРАКТЕРИСТИКИ

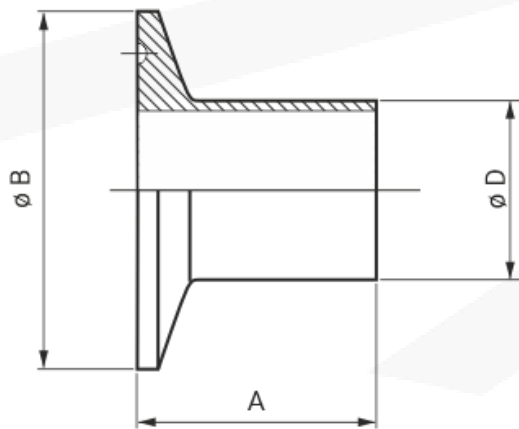
## МУФТА СОЕДИНИТЕЛЬНАЯ CLAMP

ШТУЦЕР CLAMP SMS



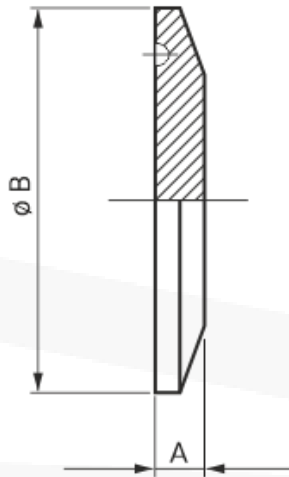
DN	A	B	D	t
25	21.5	50.5	25.4	1.5
40	21.5	50.5	38.1	1.5
50	21.5	64.0	50.8	1.5
65	21.5	77.5	63.5	1.5
80	21.5	91.0	76.3	2.0
102	21.5	119.0	101.6	2.0

ШТУЦЕР CLAMP DIN



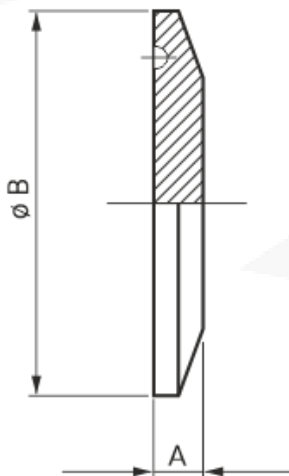
DN	A	B	D
10	18.0	34.0	13.0
15	18.0	34.0	18.0
20	18.0	34.0	23.0
25	21.5	50.5	28.0
32	21.5	50.5	35.0
40	21.5	50.5	40.0
50	28.0	64.0	53.0
65	28.0	91.0	70.0
80	28.0	106.0	85.0
100	28.0	119.0	104.0
125	28.0	155.0	129.0
150	28.0	183.0	154.0

## ЗАГЛУШКА CLAMP DIN



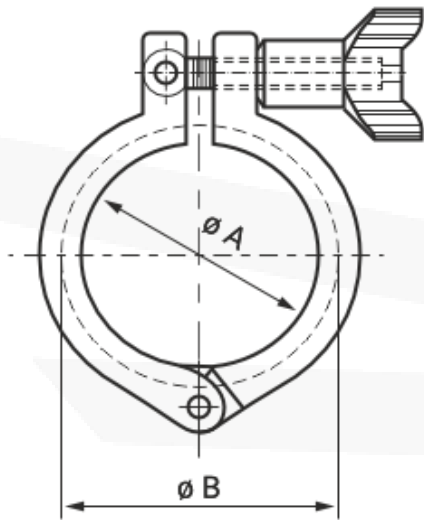
DN	A	B
15	6.3	34.0
20	6.3	34.0
25	6.3	50.5
32	6.3	50.5
40	6.3	50.5
50	6.3	64.0
65	6.3	91.0
80	6.3	106.0
100	7.9	119.0
125	11.1	155.0
150	11.1	183.0

## ЗАГЛУШКА CLAMP SMS



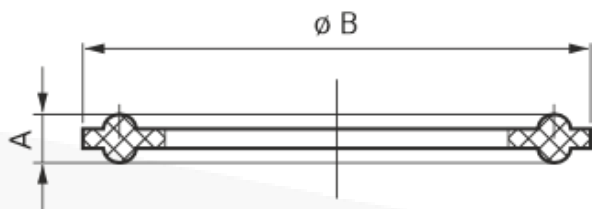
DN	A	B
10-20	6.5	34.0
25-40 (1" – 1 1/2")	6.5	50.5
50 (2")	6.5	64.0
2 1/2"	6.5	77.5
65 (3")	6.5	91.0
80	6.5	106.0
100 (4")	8.0	119.0

## XOMYT CLAMP



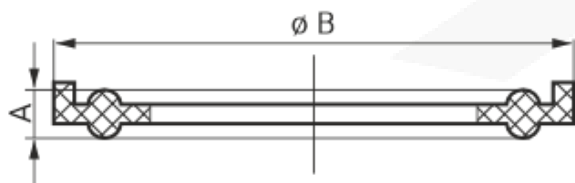
13MHH	A	B
A37	27.8	37.0
1 – 1.5"	44.4	53.6
2.0"	57.8	67.0
2.5"	71.4	80.6
3.0"	84.0	94.2
3.5"	99.0	109.2
4.0"	110.0	122.2
4.5"	123.0	133.2
6.0"	155.4	183.0
8.0"	205.0	220.0

## УПЛОТНИТЕЛЬ DIN



DN	A	B
10	5.0	34.0
15	5.0	34.0
20	5.0	34.0
25	5.0	50.5
32	5.5	50.5
40	5.5	50.5
50	5.5	64.0
65	5.5	91.0
80	5.5	106.0
100	5.5	119.0
125	5.5	155.0
150	5.5	183.0

## УПЛОТНИТЕЛЬ SMS



Размер в дюймах	A	B
1"	5.0	52.7
1 ½"	5.0	52.7
2"	5.5	66.2
2 ½"	5.5	79.7
3"	5.5	93.2
4"	5.5	121.2